

FEATURES:

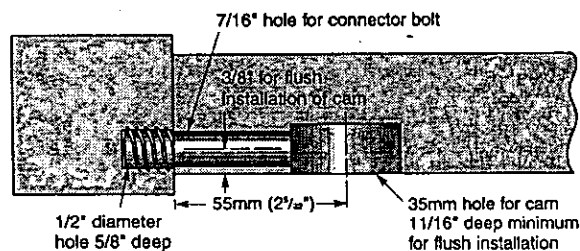
- use for 1" or thicker material
- requires 35mm dia. hole for cam
- requires 7/16" dia. hole for connector bolt
- requires 1/2" dia. hole 5/8" deep for insert
- set includes two cams, two connector bolts, two inserts and four 1/2" dia. x 2" L. wood dowels
- wood dowel in set are used for extra stability
- cams, bolts and inserts are all made from steel
- requires a 6mm hex key to turn cam for tightening

APPLICATION:

A sturdy knockdown fitting which can be flush mounted or recessed into wood bed frame members.

SPECIFICATIONS:

For Flush Mount Application



For Center Mount Application

