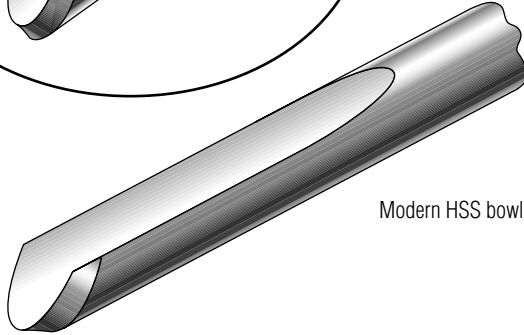
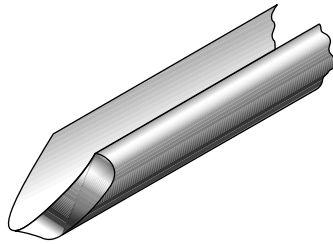


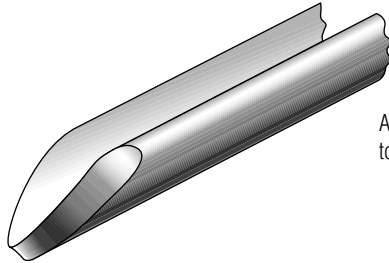
Face is square to tool and
bevel is ground to 45°.



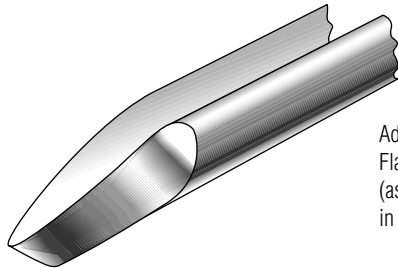
Modern HSS bowl gouge with typical factory grind.



Same gouge with face raked back, which gets the
top corners of the bevel out of the way so they
are less prone to catching.



Asymmetric grind with nose bevel flattened
to about 80°, but with side bevels at 45°.



Advanced grind with face raked far back.
Flat nose bevel, but aggressive side bevels
(as little as 20°). Leaves a superlative finish
in skilled hands.