

MISSION ENTERTAINMENT CENTERS

89/91-1150W

SLIDING DOOR TV CONSOLE

28½H 46½W 21D

Quarter Sawn White Oak or Cherry.

Frame & Panel doors and ends. Sliding doors with butterfly inlays and "V" grooves or optional glass. Two adjustable shelves behind each door, notched for wire access. 4-plug outlet with coaxial TV cable behind center door. Air slots in top and bottom of each back panel. Wire access from side to side. Available with glass doors (89/91-1150G) or speaker grill doors (89/91-1150S).



1150W



1150 (OPEN)

89/91-1144W-28

CORNER TV CABINET

28H 55W 22D

Requires 39" wall space.

Also available:

89/91-1144G-28

Same as above with glass doors.



1144W-28

89/91-1144W-36

CORNER TV CABINET

36H 55W 22D

Requires 39" wall space.

Also available:

89/91-1144G-36

Same as above with glass doors.



1144W-36

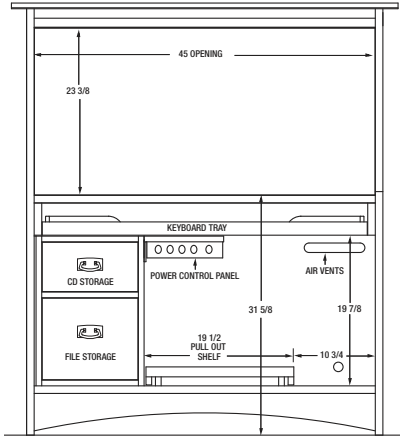


SPEAKER GRILL DOOR



GLASS DOOR
(SHOWN AS OPTIONAL GLACIER GLASS)

HARVEY ELLIS ENTERTAINMENT CENTERS



89/91-1146C
INTERIOR

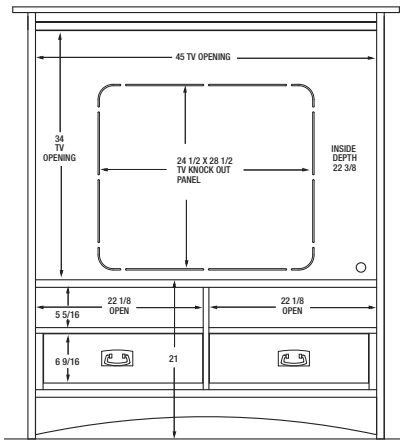


detail of inlay design



89/91-1146C HARVEY ELLIS COMPUTER CABINET
57H 51W 25D

Features a lighted interior, power control panel, tack board, pull out printer shelf and pull out keyboard. Dark copper hardware standard on oak. Light copper hardware standard on cherry.



89/91-1146E
INTERIOR



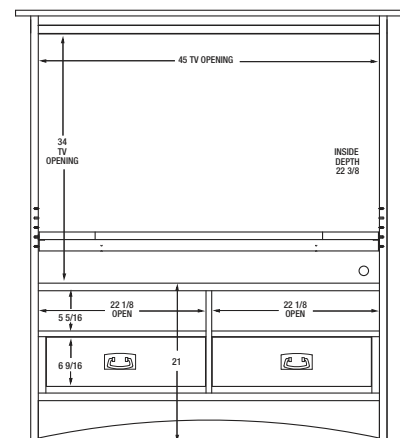
89/91-1146E HARVEY ELLIS ENTERTAINMENT UNIT
57H 51W 25D

This versatile entertainment unit accommodates standard or wide screen televisions.

Also available:

89/91-1146EAS HARVEY ELLIS ENTERTAINMENT UNIT
57H 51W 25D

Identical to the 1146E except it includes an extra adjustable shelf for plasma-type televisions. Dark copper hardware standard on oak. Light copper hardware standard on cherry.



89/91-1146EAS
INTERIOR

MISSION ENTERTAINMENT CENTERS

89/91-1151WWW

SLIDING DOOR TV CONSOLE

28½H 68W 21D

Same as 89/91-1151W but with three doors

May be created with a combination of wood, glass or speaker grill doors. Refer to the price list.

- 89/91-1151GGG Glass Glass Glass
- 89/91-1151WWW Wood Wood Wood
- 89/91-1151SSS Speaker Grill, Speaker Grill, Speaker Grill
- 89/91-1151WGW Wood Glass Wood
- 89/91-1151GWG Glass Wood Glass
- 89/91-1151WSW Wood Speaker Grill, Wood
- 89/91-1151SWS Speaker Grill, Wood, Speaker Grill
- 89/91-1151GSG Glass Speaker Grill, Glass
- 89/91-1151SGS Speaker Grill, Glass, Speaker Grill



1151WWW

89/91-1152 (shown with 89-1151 WWW)

UPPER TV CABINET

51½H 68W 13½D

For use with 89/91-1151 Series TV console

Also available

89/91-1152MB (not shown)

UPPER TV CABINET

WITH MOUNTING BRACKET

Same as above. Includes mounting bracket for Plasma or LCD TV's



89/91-1152 (shown with 89-1151 WWW)



MISSION ENTERTAINMENT CENTERS



1147W

89/91-1147W
HARVEY ELLIS WARDROBE
80H 51W 26D

Also available:
89/91-1147E HARVEY ELLIS
ENTERTAINMENT CENTER
80H 51W 26D

89/91-1147C HARVEY ELLIS
COMPUTER CABINET
80H 51W 26D

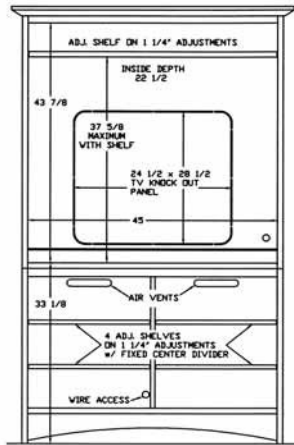
89/91-1147EAS HARVEY ELLIS
ENTERTAINMENT UNIT
80H 51W 26D
*Identical to the 89/91-1147E
except for an extra adjustable
shelf for plasma type televisions.
Dark copper hardware standard.*



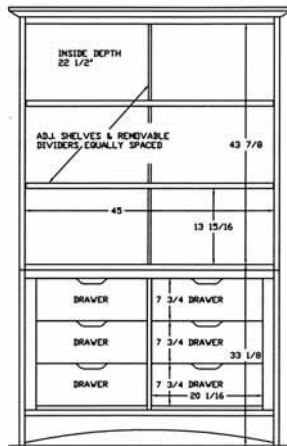
Detail of inlay design

This armoire has all the functional requirements for a wardrobe, an entertainment center or a computer cabinet. It is named for Harvey Ellis, the architect/designer who joined Gustav Stickley's Craftsman Shops in 1903, and who designed a line of inlaid furniture. The inlay of walnut, maple and cherry is a Harvey Ellis motif, and so are the arched rails and overhanging mouldings. The frame and panel door construction has thirty two pinned tenons, a 170-degree stop, and removable bi-fold doors with seeded glass and soldered joints in the upper section. The wardrobe version has six drawers in the lower part, two adjustable shelves above with three vertical dividers and a removable brass hanging rod. The computer version has a lighted interior, tack board, pull-out keyboard, electrical control panel, pull-out printer shelf, deep file, CD storage drawers, and an adjustable shelf area. As an entertainment unit, it has a TV cutout in back and an adjustable shelf above. The lower level has a fixed divider and four adjustable shelves. Available in solid quartersawn white oak or solid cherry

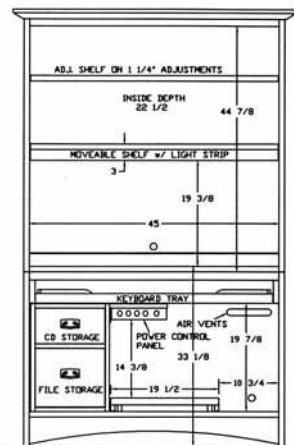
MISSION ENTERTAINMENT CENTERS



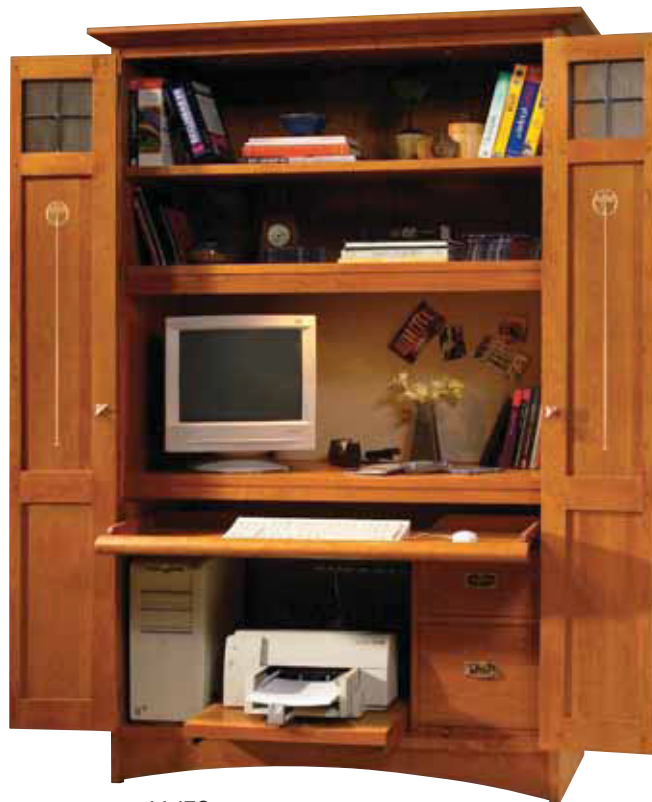
89/91-1147E
INTERIOR



89/91-1147W
INTERIOR



89/91-1147C
INTERIOR





89/91-1148 ENTERTAINMENT CONSOLE

89/91-1148

ENTERTAINMENT CONSOLE

28H 50W 20D

Two adjustable shelves in center compartment, one adjustable shelf in each end compartment. Power strip in center compartment. Tambour doors with dark copper hardware.

89/91-1148PT

28H 50W 20D

Two adjustable shelves in center compartment, two pull-out trays in each end compartment. Power strip in center compartment. Tambour doors with dark copper hardware.

Also available

89/91-1149

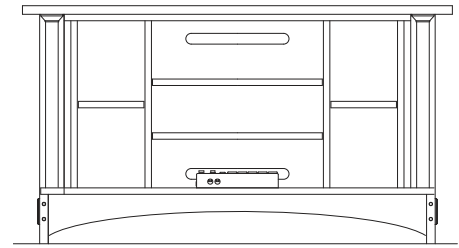
28H 62W 20D

Two adjustable shelves in center compartment, one adjustable shelf in each end compartment. Power strip in center compartment. Tambour doors with dark copper hardware.

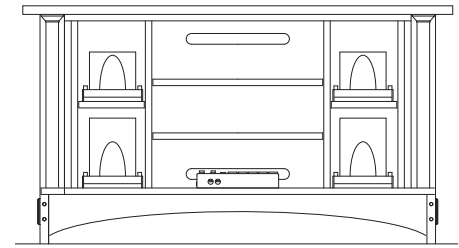
89/91-1149PT

28H 62W 20D

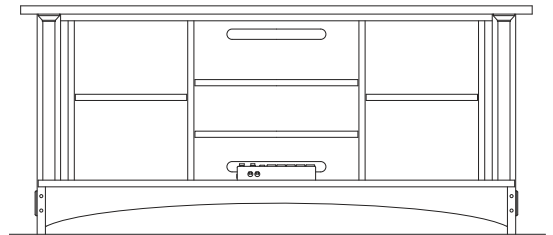
Two adjustable shelves in center compartment, two pull-out trays in each end compartment. Power strip in center compartment. Tambour doors with dark copper hardware.



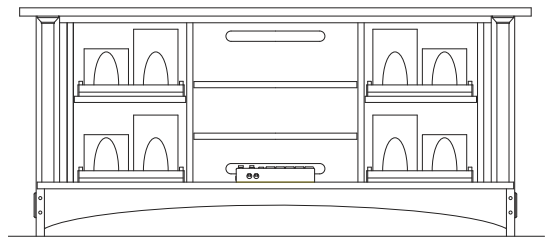
89/91-1148



89/91-1148PT



89/91-1149



89/91-1149PT

89-1124C (Shown)

TV STAND WITH CASTERS

32H 34W 21D

Also Available

89-1124

TV STAND WITHOUT CASTERS

27H 34W 21D

89/91-1125

TV /CR STAND OR NIGHT TABLE

29H 29W 17D



1124C



1125



89-210 PRAIRIE LOVE SEAT, 89-416 PRAIRIE CHAIR, 89-369 SPINDLE MORRIS CHAIR, 89-395 FOOTSTOOL, 89-767 COCKTAIL TABLE, 89-663 ROUND TABLE, 89-515 OCTAGONAL TABLE, 89-1729 FALL FRONT DESK, 89-330 SPINDLE SIDE CHAIR.
Photographed at 438 Columbus Avenue, former Gustav Stickley home in Syracuse, New York.

MISSION ENTERTAINMENT CENTERS

89-1127E
 ENTERTAINMENT CENTER
 WITH TV PULL-OUT AND
 UPPER POCKET DOORS
 79H 48W 24D



1127

89-1127T
 ARMOIRE WITH TV PULL-OUT
 AND UPPER POCKET DOORS
 79H 48W 24D
 For interior description,
 please refer to page 132.



1129A

89/91-1129A
 TV/MCR CABINET
 WITH TV PULL-OUT AND POCKET DOORS
 48H 46W 23D

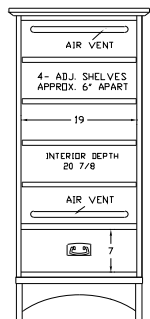
89/91-1128A
 AUDIO UNIT
 51H 25W 23D

Also Available:
 89/91-1128G
 AUDIO UNIT
 WITH GLASS DOOR
 51H 25W 23W

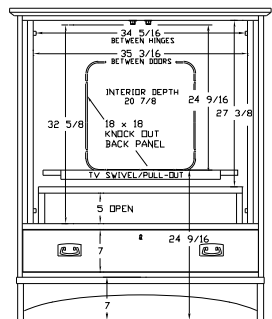
Cherry versions of these pieces
 are standard with wood knobs.



1128A



1128A & 1128G
 Four Adjustable
 Shelves



1129A



1128A
 (open)