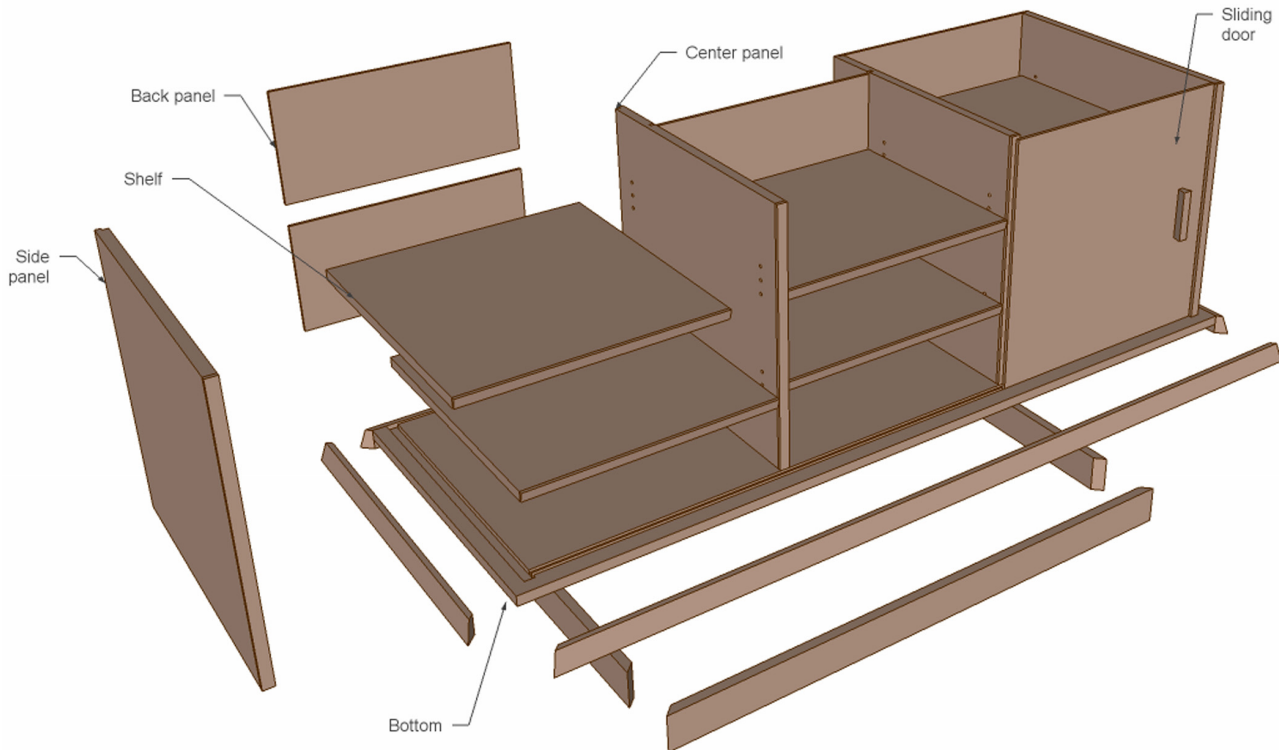
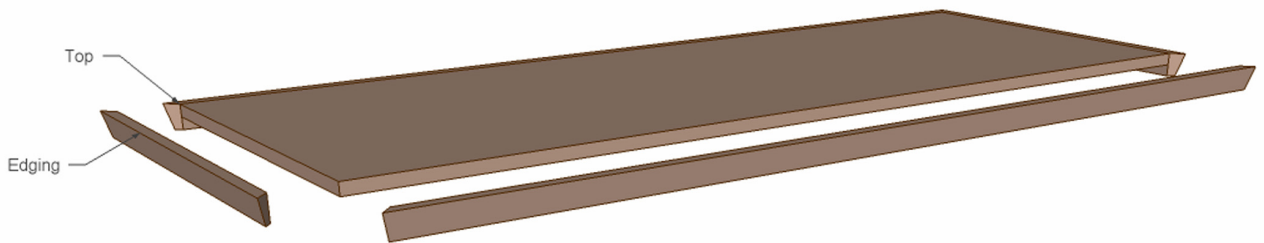
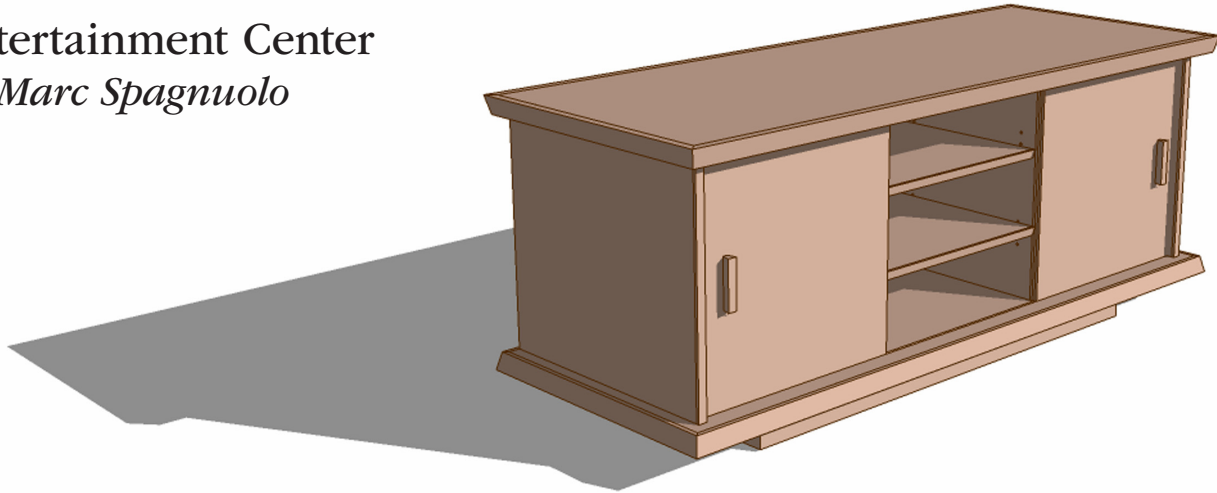
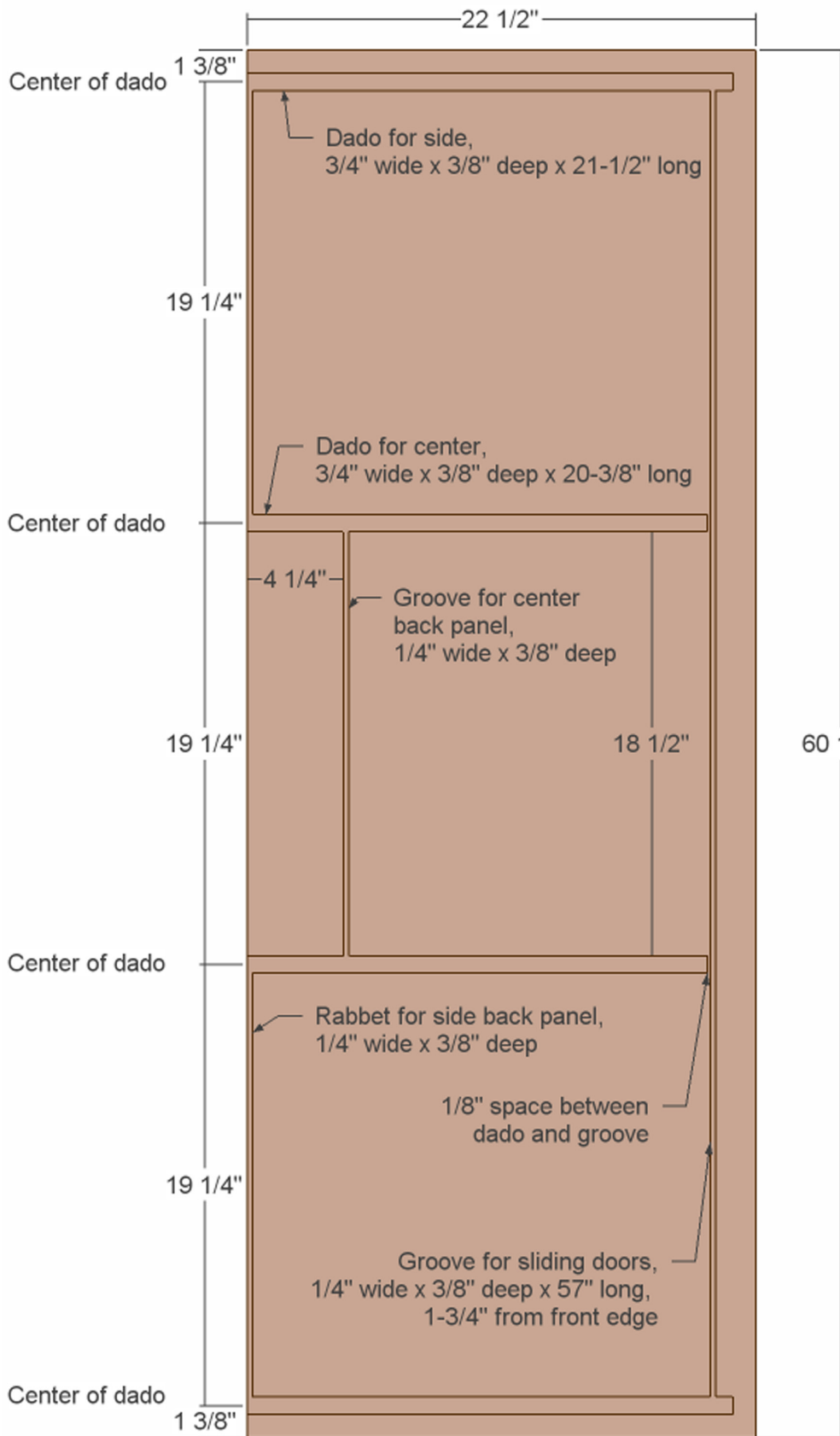


Fine Woodworking

Entertainment Center
by Marc Spagnuolo

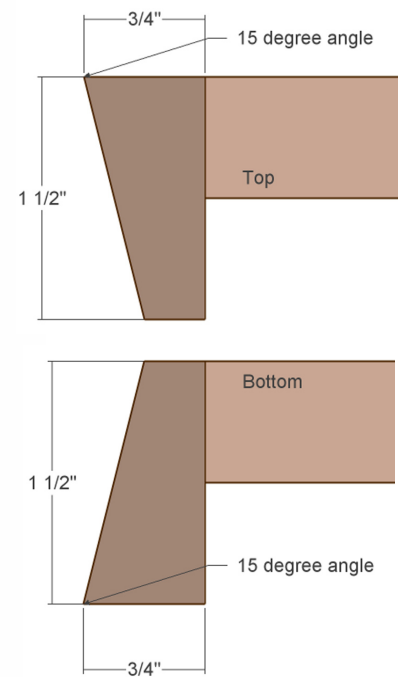


Top and bottom pieces

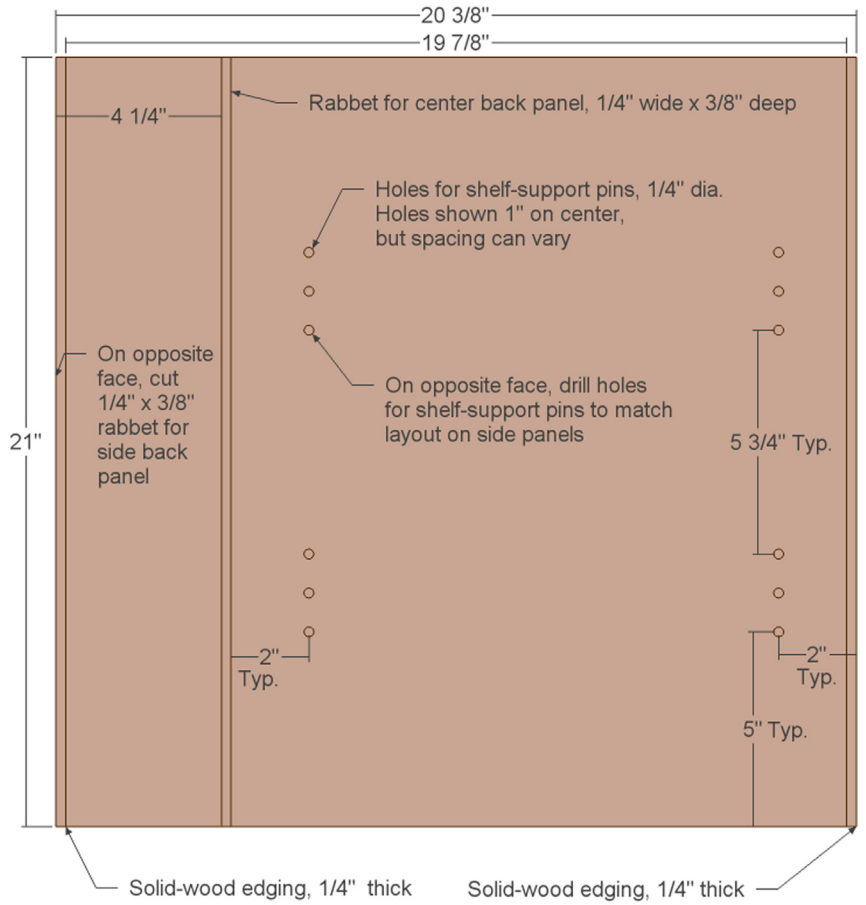


60 1/2" Front

Edging Detail

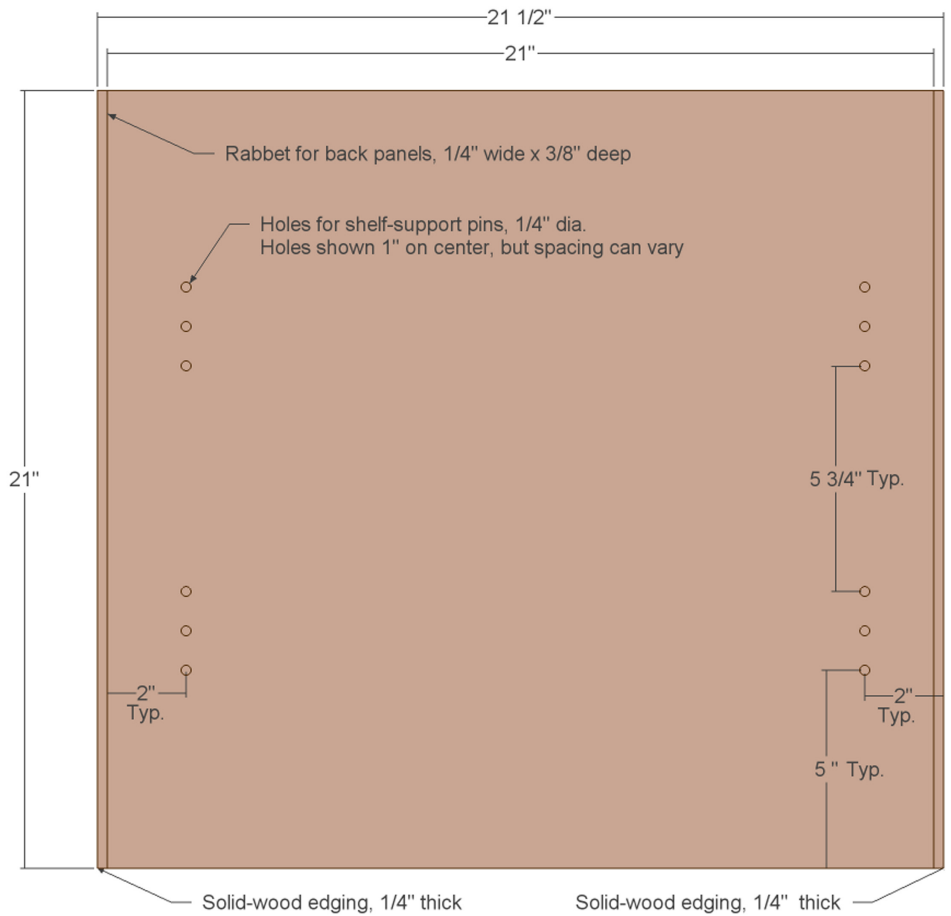
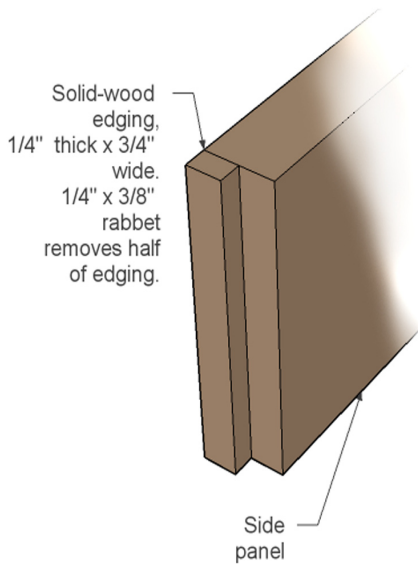


Center Panels

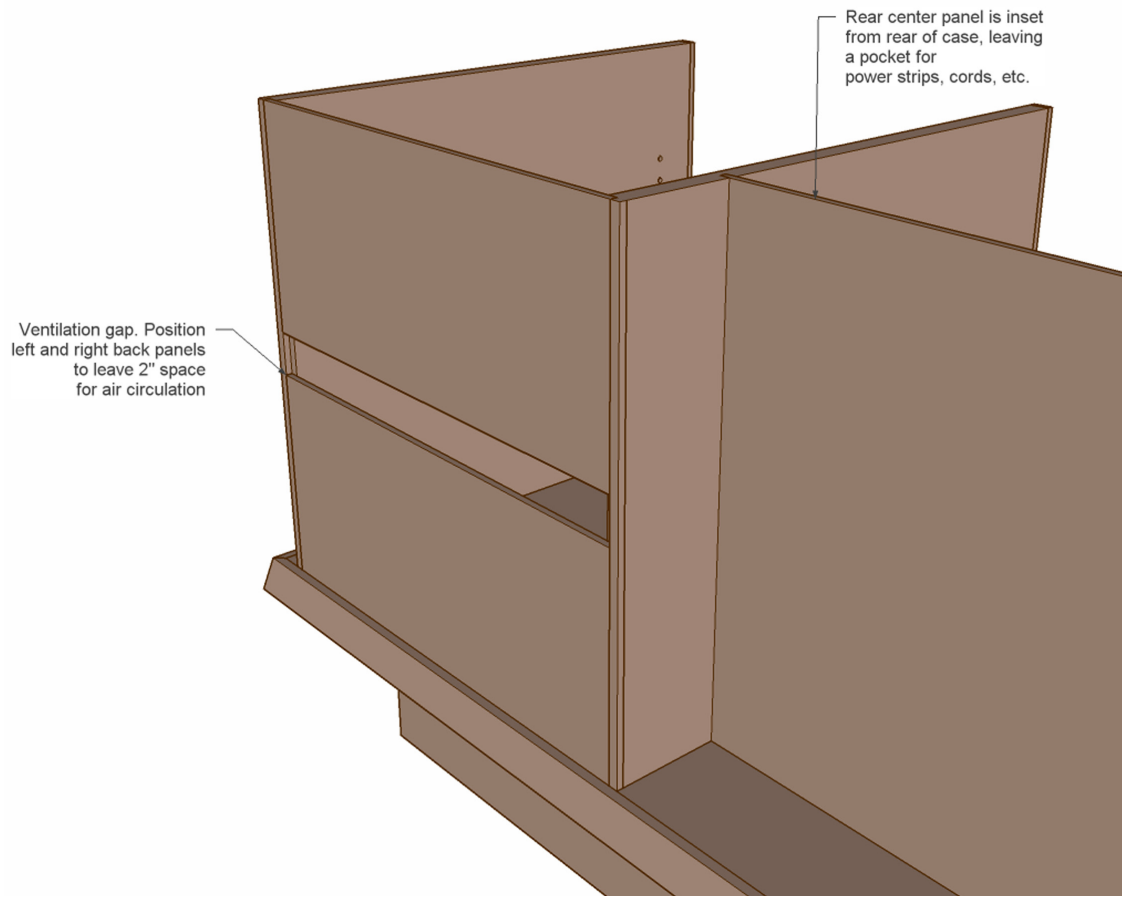


Side Panels

Rear Detail

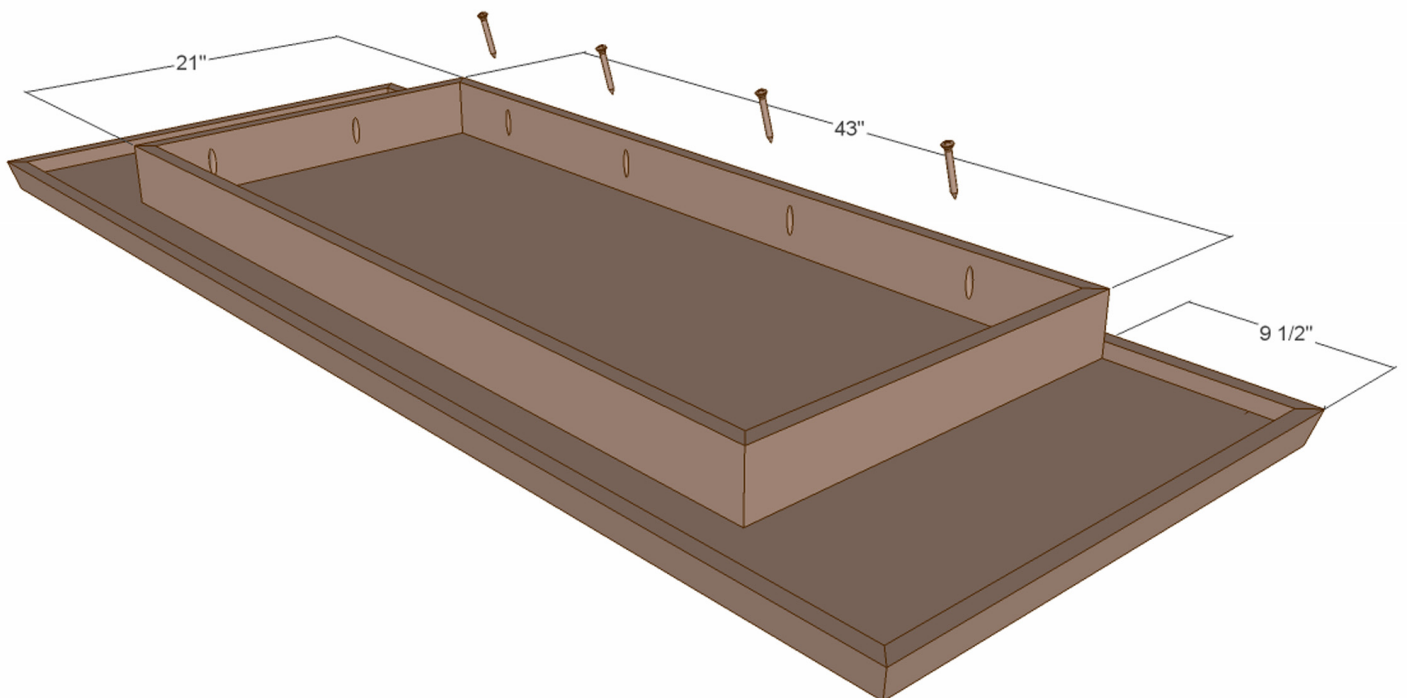


Back Panel Details

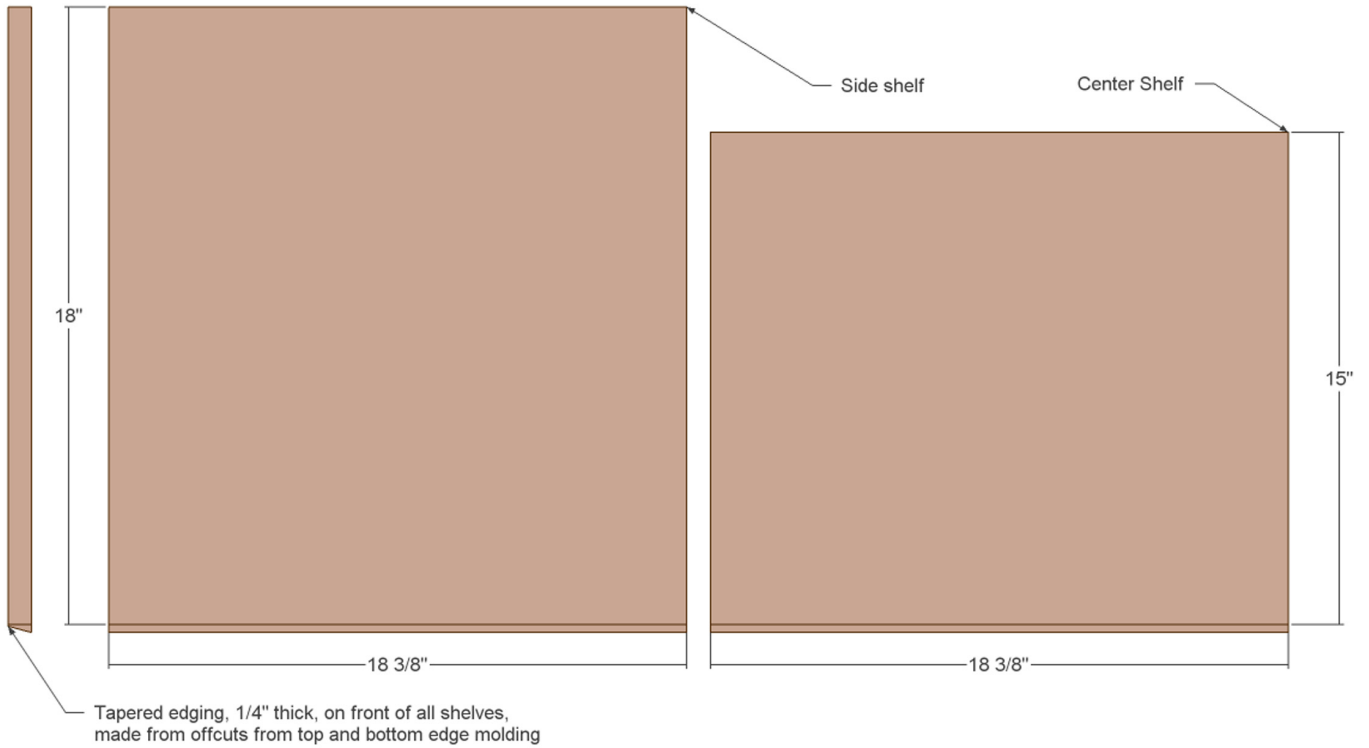


Base Details, bottom view

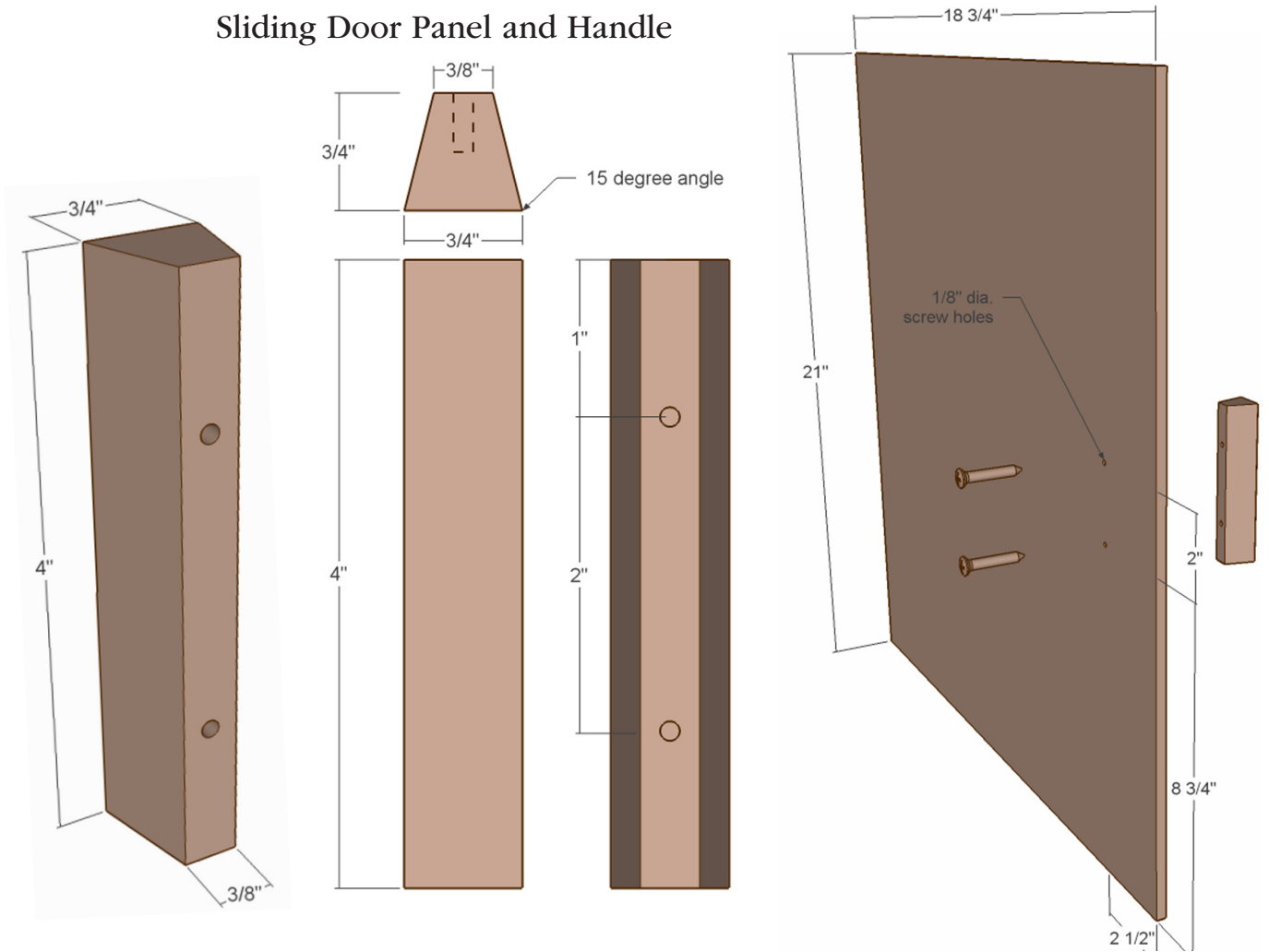
Assemble base, then attach it to cabinet with pocket screws



Shelves



Sliding Door Panel and Handle



CUTLIST

Component	Qty.	Dimensions (TxWxL), in.	Material
Top	1	$\frac{3}{4}$ x 22 $\frac{1}{2}$ x 60 $\frac{1}{2}$	Walnut-veneer plywood
Bottom	1	$\frac{3}{4}$ x 22 $\frac{1}{2}$ x 60 $\frac{1}{2}$	Walnut-veneer plywood
Side panels	2	$\frac{3}{4}$ x 21 x 21	Walnut-veneer plywood
Center panels	2	$\frac{3}{4}$ x 19 $\frac{7}{8}$ x 21	Walnut-veneer plywood
Side shelves	4	$\frac{3}{4}$ x 18 x 18 $\frac{3}{8}$	Walnut-veneer plywood
Center shelves	2	$\frac{3}{4}$ x 15 x 18 $\frac{3}{8}$	Walnut-veneer plywood
Side back panels	4	$\frac{1}{4}$ x 9 $\frac{1}{2}$ x 19 $\frac{1}{4}$	Walnut-veneer plywood
Center back panel	1	$\frac{1}{4}$ x 21 x 19 $\frac{1}{4}$	Walnut-veneer plywood
Base front & back	2	$\frac{3}{4}$ x 3 x 43	Plywood
Base sides	2	$\frac{3}{4}$ x 3 x 21	Plywood
Top & Bottom Edging, front & back	4	1 $\frac{1}{2}$ x 1 x 62	Walnut
Top & Bottom Edging, sides	4	1 $\frac{1}{2}$ x 1 x 24	Walnut
Side & Center Panel facing	4	$\frac{1}{4}$ x $\frac{3}{4}$ x 19 $\frac{3}{4}$	Walnut
Sliding Door	2	$\frac{1}{4}$ x 18 $\frac{3}{4}$ x 21	Walnut-veneer plywood
Door handles	2	$\frac{3}{4}$ x $\frac{3}{4}$ x 4	Walnut
Note: Use offcut from top and bottom edging to face the fronts of the shelves			