

Adams DC 1/21/20



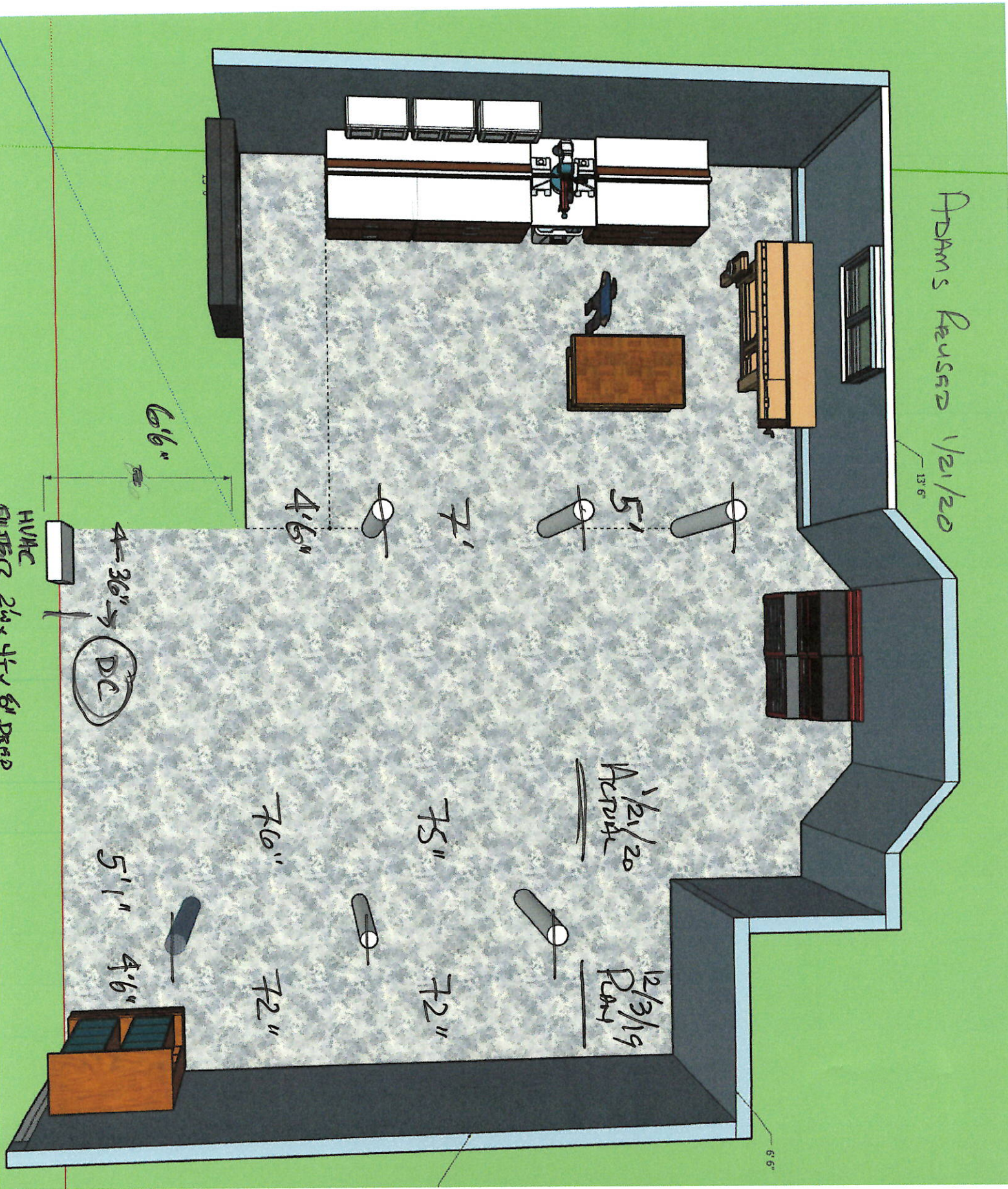


Adams Reused 1/21/20

13'6"

1/21/20  
Acrush

12/3/19  
Plan



HVHC  
FILTER 24x47x6 DRAP

DC

4-36"

6'6"

4'6"

7'1"

5'1"

7'6"

7'5"

5'1"

7'2"

7'2"

4'6"

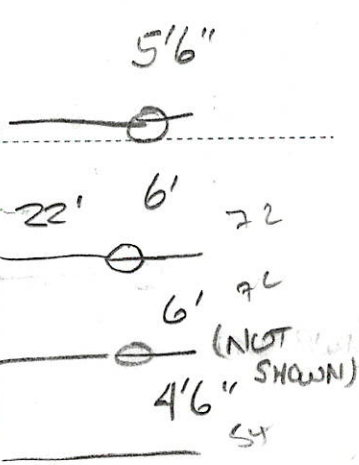
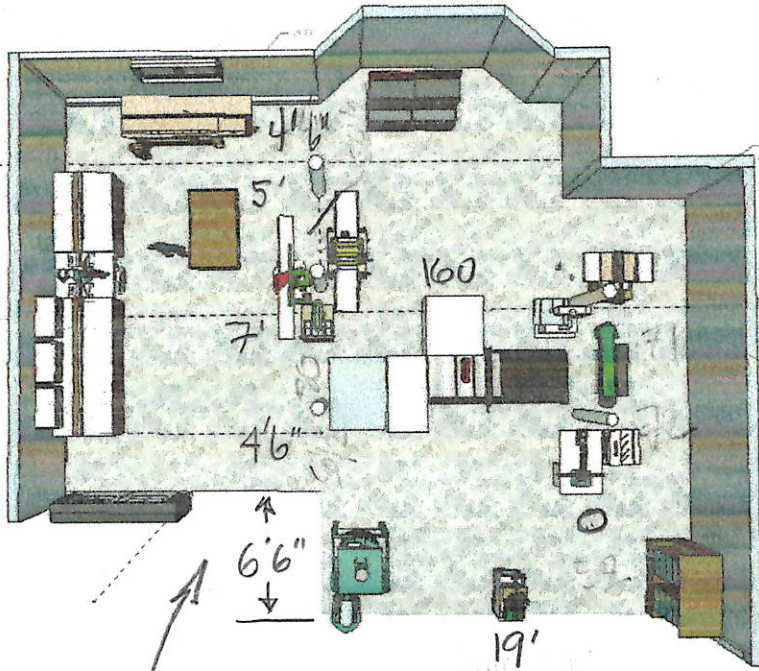
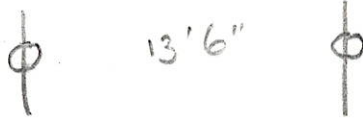
6'6"



ADAMS DC 12/3/19 ↑  
NORTH

109 ceiling ht  
36" from WALK

SPAN BETWEEN COLUMN ROW



COLUMNS - Center to Center

- 4'6"
- 5'
- 7'
- 4'6"
- 4" COLUMN

CEILING HEIGHT  
109" to bottom  
of joist